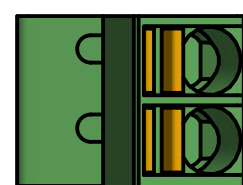
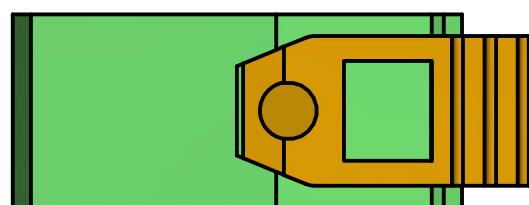



Ground lug
 6/32 x 1/4L Screw
 0.31" square surface
 Brass, Nickel plate



Conductor cross section solid min.0.2 mm²
 Conductor cross section solid max.1.5 mm²
 Conductor cross section AWG min.24
 Conductor cross section AWG max.16
 Stripping length 8 mm



Conductor cross section AWG min.24
 Conductor cross section AWG max.10
 Conductor cross section min.0.2 mm²
 Conductor cross section max.6 mm²
 Stripping length 12 mm
 Rated surge voltage (III/3) 8 kV

DRAWN J. Lizarazo	11/09/2015			
CHECKED				
QA		IsoBlock V-4c		
MFG		SIZE C	DWG NO	REV
APPROVED		SCALE	SHEET 1 OF 1	